
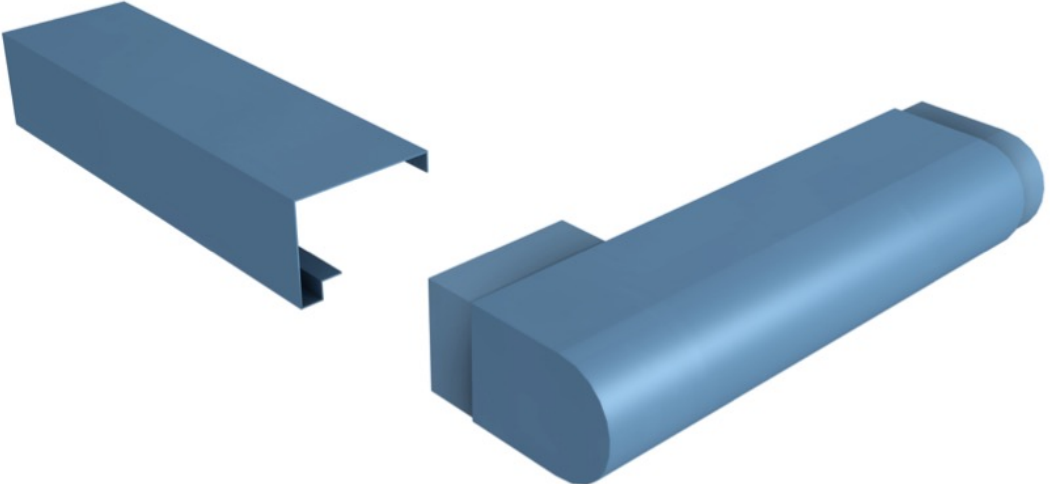
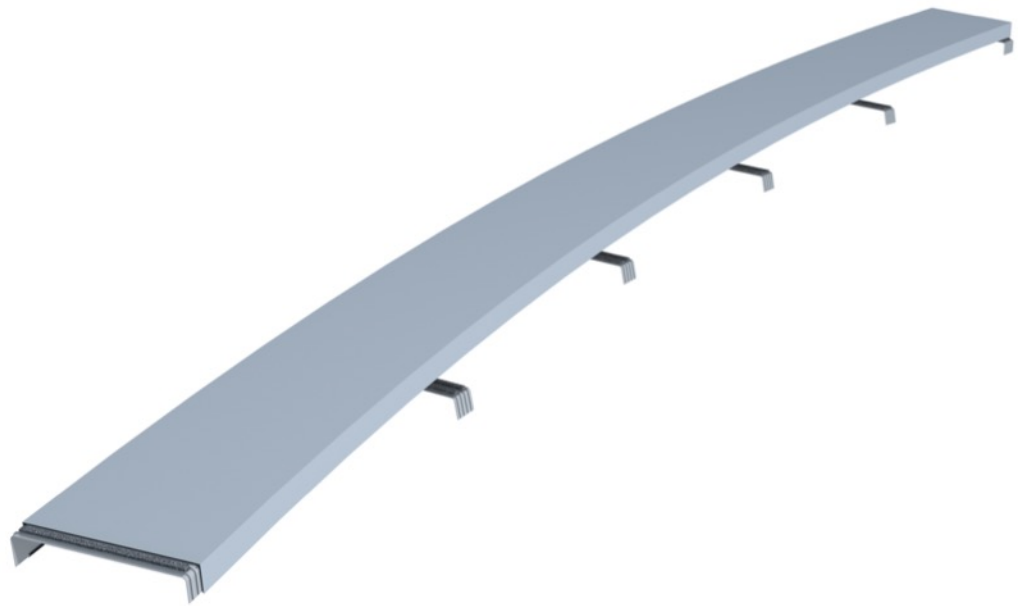


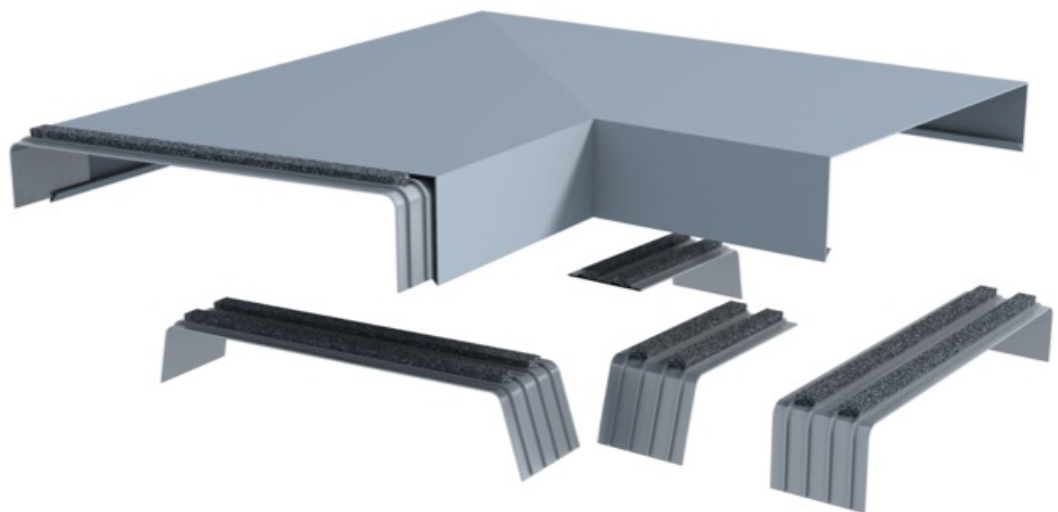
Trimform Fabrications

Description	
<p>Applications</p>	<p>Trimform Products specialises in the production of bespoke fabrications to a customer’s design.</p> <p>Fabrications are not limited to those used in construction and can be in all sorts of materials and for all sorts of applications.</p> <p>Trimform manufacturing facilities enable the production of angular or curved items, perforations, natural or painted finishes including pre-coated or powder coated finishes.</p> <p>The Trimform service includes the production of specialist fabrications using a customer’s free issue materials for those situations where the customer has to match a specific material, grade or finish. Trimform can use the customer’s materials for specialist fabrications.</p> <p>What ever your requirement, speak to Trimform for guidance on the most cost effective design for production.</p> <p>Factory assembled louvre panels or cassette panels are manufactured to a customer’s particular design from pre-coated steel or powder coated aluminium. Panels can be solid, perforated or slotted, 2mm or 3mm powder coated aluminium, cassette rainscreens, louvre assemblies, or other fabrications, all to a customer’s design.</p> <p>Perimeter flashings are often the most prominent aspects of a roof that are noticed by building users. The actual roof covering is often out of sight. Well manufactured and installed flashings, fabrications, soffits and fascias are essential to the success of a building.</p> <p>Trimform manufactures bespoke fabrications for soffits, straight or curved bullnose and angular fascias, soakers and column casings, all to a customer’s particular design. 2mm and 3mm aluminium is formed by pressing, folding and welding into the required shape and polyester powder coated to the specified RAL colour. Fixing location holes and slots can be factory punched and soffits can be slotted for ventilation. Integral bonded or loose butt straps are provided.</p>  

Trimform Fabrications






Aluminium cappings are manufactured to a customer’s design and dimensions. They consist of 2mm and 3mm aluminium, powder coated to the specified RAL colour and formed to the length, width and depth dimensions required. Cappings are available in straight, mitred or curved-on-plan formats. The cappings can be secret fix, attached using concealed extruded aluminium cleats with integral sealant gaskets available from Trimform. The concealed clip-on bracket with integral gasket seal accommodates the effects of thermal movement at junctions and fasteners.



Materials

- Aluminium (1050 grade or to customer spec)
- Pre-coated aluminium (to suit fabrication)
- Galvanised (steel DX51)
- Pre-coated steel (S220GD+Z275 or AZ150 BS EN 10346)
- Stainless steel (to customer spec)
- PVC Membrane Coated Steel
- Customer free-issue specialist metals

Trimform Fabrications

<p>Finishes</p>	<p>Post coated aluminium (PPC) to the specified RAL colour Pre-coated aluminium</p> <ul style="list-style-type: none"> • PUR-PA, 28µm • PVdF, 28µm • SP, 35µm <p>Pre-coated steel</p> <ul style="list-style-type: none"> • Plastisol PVC(P), 200µm • Polyester SP, 25µm • High Build Polyester HBP, 50µm • Colorcoat HPS200 Ultra®, 200µm
<p>Production methods</p>	<p>Folding Brake press Welding Punching CNC cutting TIG and MIG welding Curving</p>
<p>Delivery</p>	<p>Products are protected, banded, shrink wrapped. Delivery is by Trimform Products delivery fleet. Inspect packs and record any damage/shortages on delivery paperwork, backed by photos to be sent to Trimform with a report within 48 hours.</p>
<p>References</p>	
<p>Trimform Products</p>	<p>Trimform Products, Harding Way, Somersham Road, St. Ives, Huntingdon, Cambridgeshire, PE27 3WR T 01480 461103, F 01480 461102, E info@trimformfabs.co.uk Trimform Products (a division of Building Solutions (National) Limited). Registered in England and Wales No. 11912299. ©Building Solutions (National) Limited.</p> <p>Colorcoat HPS200 Ultra® and Confidex® are trademarks of Tata Steel UK Limited</p> <div style="display: flex; justify-content: space-around; align-items: center;"> <div data-bbox="411 1288 561 1400">  <p>Assessed to ISO9001:2008 Cert No 1340-01</p> </div> <div data-bbox="673 1294 778 1370">  </div> <div data-bbox="906 1303 1268 1370">  </div> </div>